

# Village Study Analysis

## Melacheruvu

TEAM MEMBERS:

M.RAHUL(IES)

VASAVI PRAKASH(IFOs)

SHEKHAR SRIVASTAVA(ISS)

KAVITHA.A(IRS-C&CE)



# MELACHERUVU

- Gadwal mandal, Mahabubnagar district, Andhra Pradesh
- Total area(acres) - 2484
- Total population - 1981 (2011 census)
- Literacy rate - 41.49%
- Economic activities - Agriculture, brick making & stone cutting



# METHODOLOGY

The background image shows a chalk drawing of a village map on a dirt ground. The map includes several small houses, a central area labeled 'Rajon School', and a path. People's feet are visible around the map, suggesting a community meeting or participatory activity.

- **Participatory Learning and Action(PLA)**
  - Transact, Resource, Social and Wealth map
  - Timeline
  - Seasonality analysis
  - Problem ranking
  - Venn diagram
- **Focus group discussion**
- **Sample survey and interview**












# Our limitations

- 
- Language
  - Division between the village and the inherent competition between the two colonies
  - Lesser time for developing a complete and holistic understanding of the village



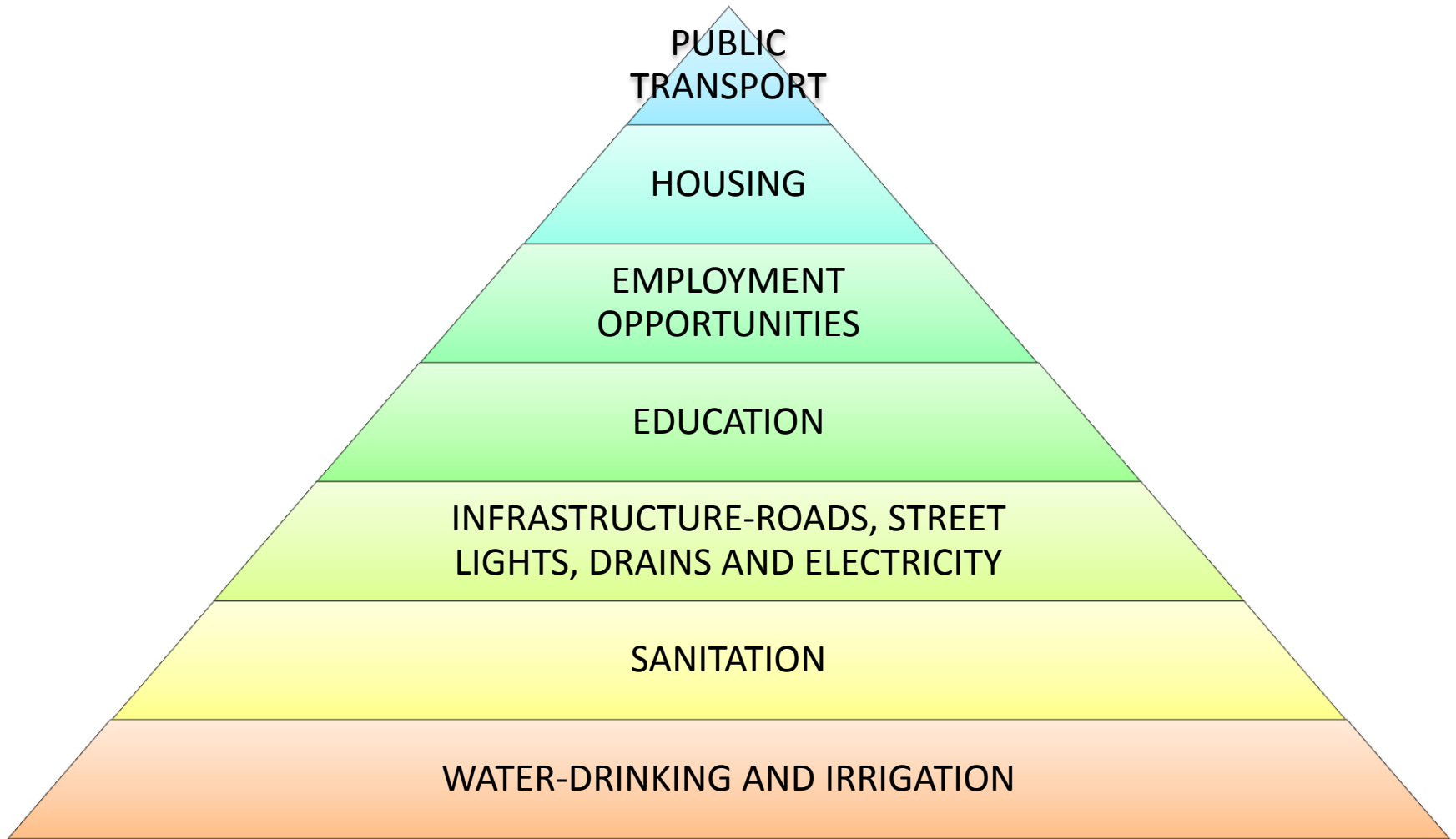
# SECTOR WISE ANALYSIS

- Education
- Health
- PRI
- Agriculture
- Economy and poverty alleviation
- Gender issues





# PROBLEM RANKING



## Problems identified

- Division in the village
- Water
- Sanitation
- Entitlements mentality
- Public infrastructure: transport, electricity, street lights, cc roads, drainage
- Low literacy rate
- Low social mobilisation- SHGs not as per AP standards
- Lack of entrepreneurship
- Gender Issues

## Suggested measures

- Competition → development → cooperation
- 'Waterman' model
- Access to water and focused intervention
- Entitlements → empowerment
- Provision of infrastructure
- Providing incentives for higher educational attainment
- Revitalising SHG movements
- Skill development, vocational training, SHGs
- Education, SHGs, NGOs



# SPARK IN THE DARK

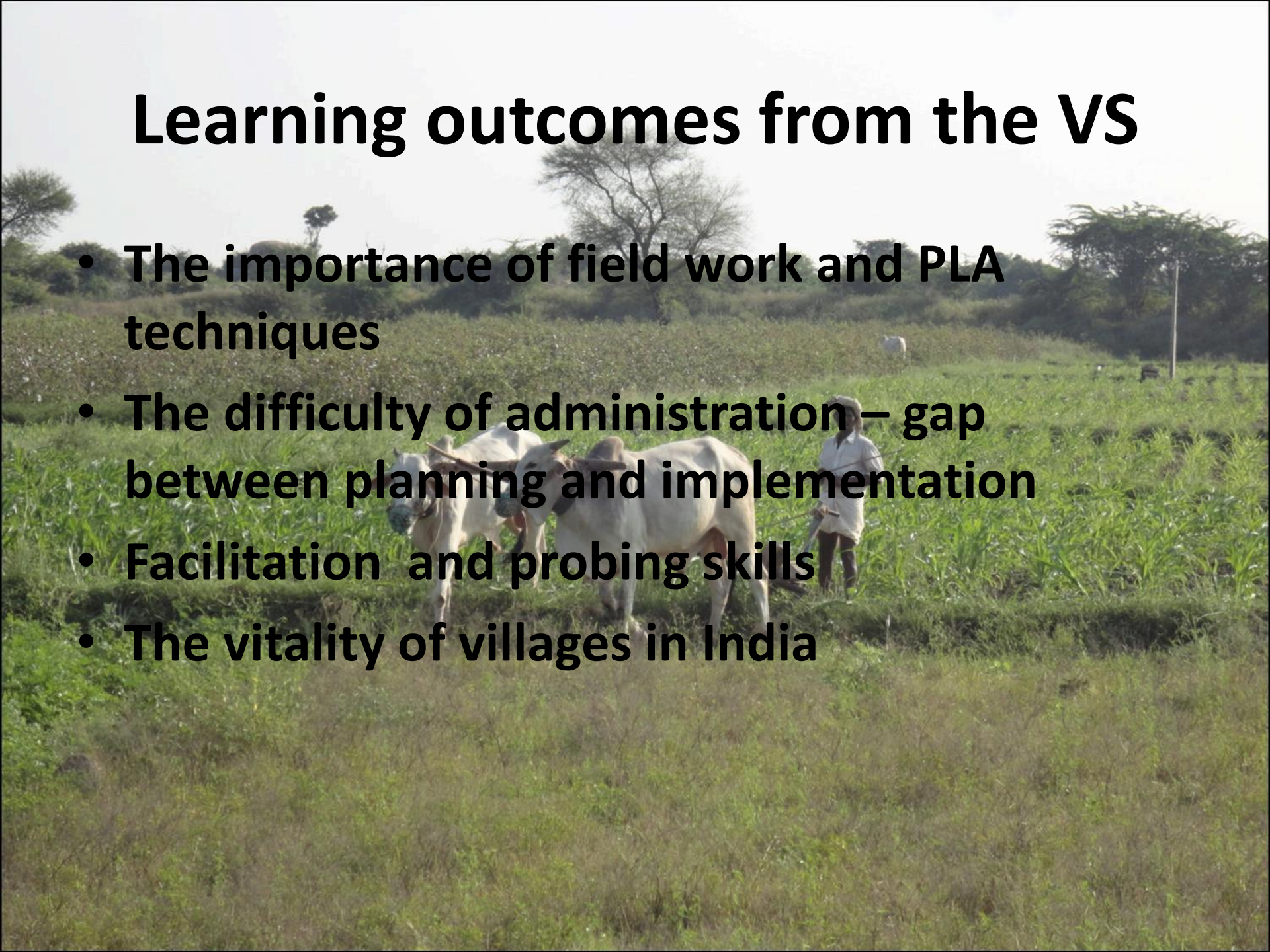
- Well functioning PS and UPS in the village
- The enthusiastic children – Reshma, Mamta Mary, Azad, Balu, Rajesh and many more...





# Learning outcomes from the VS

- The importance of field work and PLA techniques
- The difficulty of administration – gap between planning and implementation
- Facilitation and probing skills
- The vitality of villages in India





Thank you

